



# HIGH PERFORMANCE FIRE RESISTANT *PROTECTIVE APPAREL*

## ***Knit Button-Up Shirts***

Featuring a 16 Cal Button-Up

***Page 10***

## ***Waffle Cut FR***

Pull-Over Design with  
Built-in Balaclava

***Page 19***

## ***High Performance FR Sweater Knit***

Soft, Comfortable, & Stylish

***Page 20***

## ***High Performance FR Hoodies***

Dual Hazard, Water &  
Wind Resistant

***Page 22***





# TABLE OF CONTENTS



**PROTECTING WORKING  
PROFESSIONALS  
*SINCE 1982***

For over 40 years, Lakeland Industries has been a global manufacturer of premium protective clothing. Providing products to working professionals in Electric and Gas Utilities, the Oil and Gas Industry, General Manufacturing, and the Petrochemical sector, we pride ourselves in helping keep workers safe on the job and comfortable at home.



# HPFR WORKWEAR

## LAKELAND'S FR/AR LAYERING SYSTEM

*EACH LAYER HAS A PURPOSE*

*Whether you're working on a sizzling summer day or in -10 degree weather, Lakeland's FR/AR Layering System offers the performance, protection, and comfort you need. Permanent moisture wicking properties engineered with inherently FR fabrics ensure your year-round comfort and safety.*

### BASE



### MID



### OUTER



**Base layers** are the foundational key to the Lakeland FR/AR Layering System. For you to be cool in the heat of summer and warm in the frigid cold, you need to be dry. Base layer shirts have the optimal 60/40 blend of hydrophobic and hydrophilic fibers to constantly pull moisture away from your body, move it to the outer surface of the garment, and allow it to dry. Staying dry is the key to keeping you comfortable and better protected.

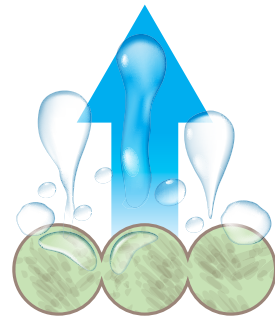
**Mid layers** are the versatile garments that can help take the chill off for a few hours on a fall morning or provide an extra layer of insulation for those long, frigid winter days. Paired with a base layer, mid layers continue to pull moisture away from your body and move it to the outermost garment so it can dry. Lightweight, effective fabrics let mid layers increase comfort without reducing mobility.

**Outer layers** complete the Layering System, giving you the comfort and protection, you demand. Moisture wicking fabrics continue the process of pulling moisture away from your body to the outermost layer so that it can dry, while the wind resistant / water resistant fabrics help keep the elements at bay so you can focus on the task at hand.

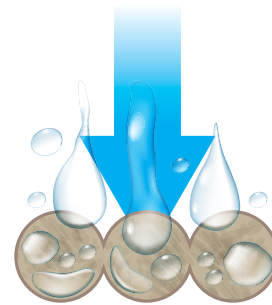


# MOISTURE WICKING FABRICS

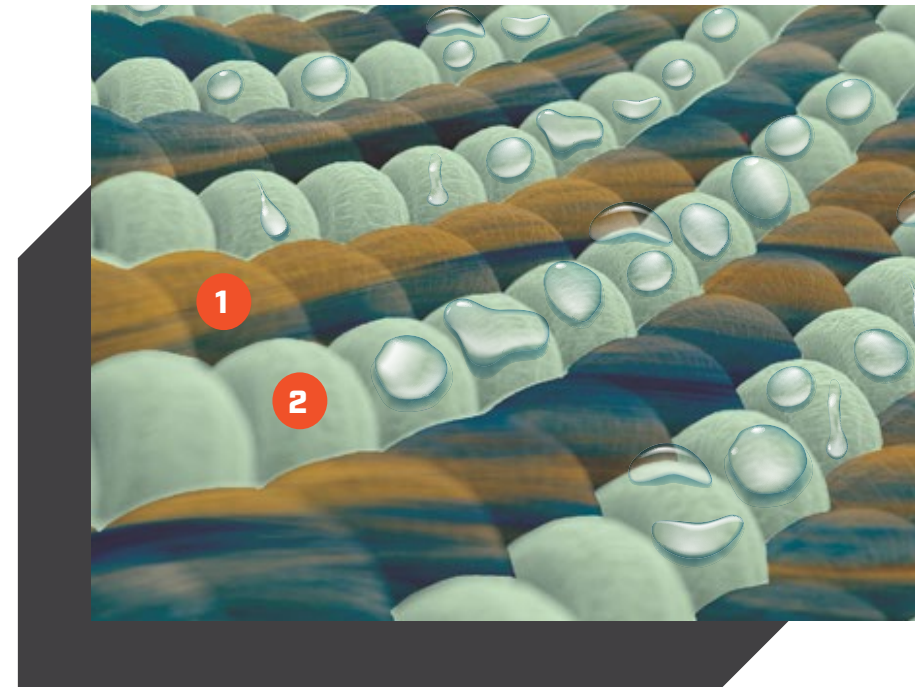
*THE KEY TO COOL SUMMERS & WARM WINTERS*



**HYDROPHOBIC FIBERS**  
*REPEL MOISTURE*



**HYDROPHILIC FIBERS**  
*ATTRACT MOISTURE*



Absorb moisture and sweat with hydrophilic fibers

1. Absorb moisture and sweat with hydrophilic fibers
2. Push moisture and sweat away from the body with hydrophobic fibers, then pull the moisture and sweat through the garment to the outside for quick dispersion and drying

## Why Moisture Wicking Matters

Choosing FR workwear plays a critical role in worker safety and comfort. Looking for shirts, pants, and outerwear with moisture-wicking properties can help:

- **Help Prevent Heat Stress**  
Prevent heat stress to avoid overheating and heat stroke.
- **Provide an Effective Base Layer**  
Staying warm during the winter months starts with fabrics that can quickly pull sweat away from your skin to keep you warm and dry.

## Moisture Wicking Fibers?

Superior moisture wicking fabrics combine two types of fibers together: **hydrophobic** (water repelling) fibers and **hydrophilic** (water attracting) fibers. Hydrophobic fibers are synthetic and include nylon, aramids, and modacrylics. Hydrophilic fibers like cotton, wool, and lyocell feel natural against the skin.

Spun together with precision, the fibers combine to form a garment with permanent moisture wicking technology.

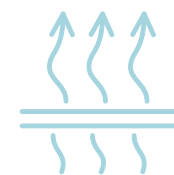
## Moisture-Wicking Fabrics and Technology

Moisture-wicking fabrics were originally created to help boost athletic performance in extreme outdoor situations by keeping athletes drier and cooler in hot conditions, and warmer and drier in cold weather.

The original moisture-wicking fabrics coat a synthetic fiber like polyester with a chemical finish that allows moisture to spread. Eventually this finish washes out and the fabric loses its wicking abilities. These “original” fabrics are still in the marketplace and can be easily identified.

***CHECKING THE TAG ON A GARMENT WILL REVEAL ITS BLEND OF FIBERS. A GARMENT WITH 100% OF ANY FIBER, ALONG WITH CLAIMS OF MOISTURE-WICKING, IDENTIFIES THE PRESENCE OF A FABRIC WITH A CHEMICAL FINISH.***

*Lakeland High Performance FR apparel takes moisture wicking to the next level, because how quickly you feel dry and comfortable matters all year long. All High Performance FR Fabrics from Lakeland incorporate these key features to pull moisture from your body and help it dry quickly so you can stay comfortable regardless of the temperature or season.*



**AIR PERMEABILITY**

Breathability of the fabric, or air permeability, is important to keep you cool on the job.



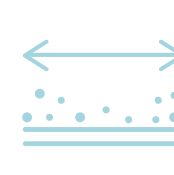
**VERTICAL MOISTURE WICKING**

Vertical moisture wicking measures how well a garment pulls moisture off of your skin into the fabric.



**TRANSPORT OF MOISTURE**

Transport of moisture refers to a garment's ability to move moisture through the fabric to the outside surface.



**SPREAD OF MOISTURE**

Spread of moisture measures how quickly moisture spreads on the surface. The faster it spreads dictates how quickly you will feel dry.



**WATER VAPOR TRANSMISSION RATE**

Water vapor transmission rate measures how quickly moisture dissipates through a garment.



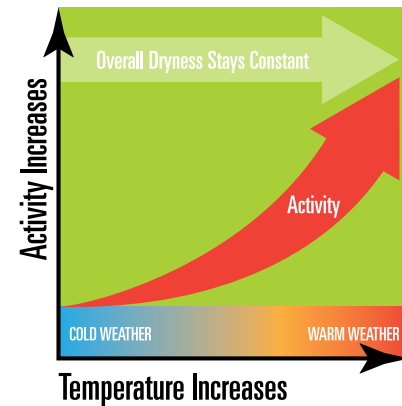
# FR LAYERING

## FOR WARM, DRY WINTERS

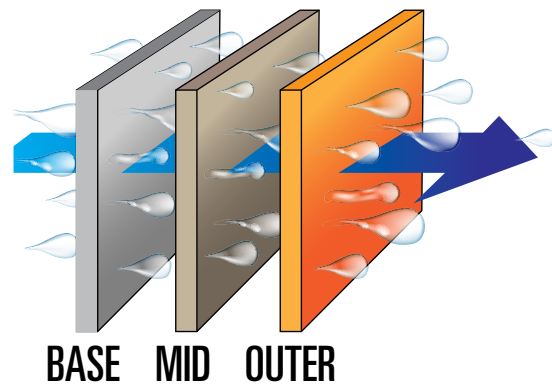
### Moisture-wicking Matters for Warmth

As you add and remove layers in cold weather climates, you rely on your FR garments to offer you protection, comfort and dryness. Lakeland FR garments feature a **60/40** hydrophobic/hydrophilic fiber blend, which means you are getting the optimal moisture-wicking benefits from your apparel.

As your activity level increases, you shouldn't notice a difference in overall dryness. Permanent moisture-wicking fibers in your layering system should work to keep you dry with every added layer so you never feel wet on the job.



As temperatures fluctuate, your layering system should work *with* you to keep you both dry and warm. A layering system designed to function effectively in all climates, regardless of activity level, is the ultimate goal.



Understanding the correct way to layer apparel to maintain body temperature, dryness and protection from the elements takes more than just a system—it takes a system with the right fabrics and technology.



**EVERY LAYER OF APPAREL YOU WEAR ON THE JOB MATTERS.**

***EACH LAYER SHOULD INCLUDE PERMANENT MOISTURE-WICKING TO ENSURE THE EFFECTIVENESS OF YOUR TOTAL SYSTEM. NEXT TO SKIN IS MOST IMPORTANT FOR COOLING AND DRYNESS BUT EACH LAYER MUST MOVE MOISTURE AWAY FROM THE BODY.***

Working in the cold is no easy task. As you work in freezing, unforgiving winter weather, the ability to effectively layer protective apparel is essential, not only for safety, but also for flexibility and optimal performance as temperatures and the elements outside fluctuate.

Lakeland's hoodie and jacket are water and wind resistant PLUS moisture wicking. Keeping out the elements while moving moisture away from your body is the key to the performance of an effective layering system.

**BASE**

**MID**

**OUTER**





# UNDERSTANDING ARC FLASH PROTECTION

## WHEN LAYERING GARMENTS

When wearing multiple garments, that specific combination of clothing must be tested together to determine their effective arc rating. Lakeland's FR/AR Layering System offers some of the highest levels of protection in the industry. Add the benefits of inherent FR properties, lightweight fabrics and permanent moisture wicking technology and you have superior performance, protection and comfort.

BASE

A light beige long-sleeved Henley shirt with red piping along the seams.

+

MID

A high-visibility yellow long-sleeved button-down shirt with reflective silver stripes.

=

28<sub>cal/cm<sup>2</sup></sub>

CAT 3

A light grey long-sleeved Henley shirt with red piping along the seams.

+

A dark navy blue long-sleeved waffle-cut jacket with red piping.

=

43<sub>cal/cm<sup>2</sup></sub>

CAT 4

A high-visibility yellow long-sleeved Henley shirt with reflective silver stripes.

+

A grey long-sleeved crewneck sweater with a ribbed collar.

=

45<sub>cal/cm<sup>2</sup></sub>

CAT 4

HPFR KNIT  
(long sleeve or long sleeve Henley style)  
ATPV: 16.4 cal/cm<sup>2</sup>

WESTEX® DH SHIRT  
ATPV: 8.9 cal/cm<sup>2</sup>

HPFR KNIT  
(long sleeve or long sleeve Henley style)  
ATPV: 16.4 cal/cm<sup>2</sup>

HPFR 8.0 oz WAFFLE CUT JACKET  
ATPV: 9.7 cal/cm<sup>2</sup>

HPFR KNIT  
(long sleeve or long sleeve Henley style)  
ATPV: 16.4 cal/cm<sup>2</sup>

HPFR SWEATER KNIT  
ATPV: 14 cal/cm<sup>2</sup>

BASE

A light grey long-sleeved Henley shirt with red piping along the seams.

+

MID

A dark navy blue long-sleeved waffle-cut jacket with red piping.

+

OUTER

A grey long-sleeved zip-up jacket with a high collar.

=

57<sub>cal/cm<sup>2</sup></sub>

CAT 4

A light beige long-sleeved Henley shirt with red piping along the seams.

+

A bright blue long-sleeved button-down shirt.

+

A dark navy blue long-sleeved zip-up hoodie.

=

58<sub>cal/cm<sup>2</sup></sub>

CAT 4

A light grey long-sleeved Henley shirt with red piping along the seams.

+

A dark navy blue long-sleeved button-down shirt.

+

A grey long-sleeved zip-up jacket with a high collar.

=

60<sub>cal/cm<sup>2</sup></sub>

CAT 4

HPFR KNIT  
(long sleeve or long sleeve Henley style)  
ATPV: 16.4 cal/cm<sup>2</sup>

HPFR 8.0 oz WAFFLE CUT JACKET  
ATPV: 9.7 cal/cm<sup>2</sup>

HPFR ZIP JACKET  
ATPV: 28 cal/cm<sup>2</sup>

HPFR KNIT  
(long sleeve or long sleeve Henley style)  
ATPV: 16.4 cal/cm<sup>2</sup>

WESTEX® DH SHIRT  
ATPV: 8.9 cal/cm<sup>2</sup>

HPFR ZIP OR PULLOVER HOODIE  
ATPV: 28 cal/cm<sup>2</sup>

HPFR KNIT  
(long sleeve or long sleeve Henley style)  
ATPV: 16.4 cal/cm<sup>2</sup>

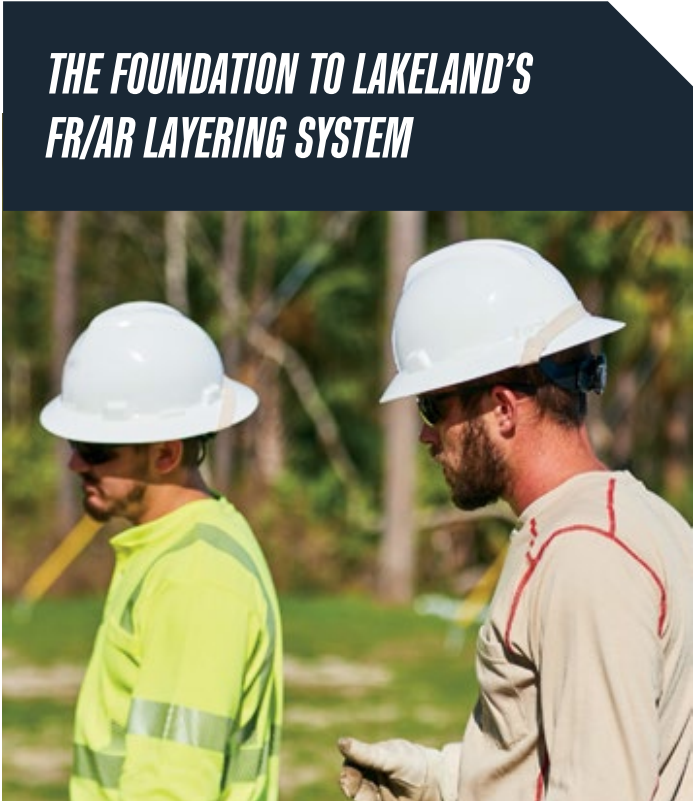
WESTEX® DH SHIRT  
ATPV: 8.9 cal/cm<sup>2</sup>

HPFR ZIP JACKET  
ATPV: 28 cal/cm<sup>2</sup>



# MEN'S HIGH PERFORMANCE FR KNITS

LIGHTWEIGHT | INHERENTLY FR | PERMANENT MOISTURE WICKING



THE FOUNDATION TO LAKELAND'S  
FR/AR LAYERING SYSTEM

## Maximum Protection and Maximum Features

- Unparalleled CAT 2 protection at 16.4 cal/cm<sup>2</sup>
- NFPA 70E and NFPA 2112 - UL Certified
- Moves moisture away from your body faster, from front to back, to spread quicker for superior drying
- Excellent breathability
- Soft and comfortable
- Hi-Vis versions feature 3M Scotchlite® Segmented Reflective trim, meeting ANSI 107 Class 3 for visibility
- NEW! Hi-Vis reflective trim allows for corporate logo imprint over pocket

## Specifications:

**Fabric:** 6.95 oz. Inherently FR Lightweight Fabric

**Standard:** NFPA 70E, NFPA 2112 - UL Certified

**ATPV:** 16.4 cal/cm<sup>2</sup> **CAT:** 2

**Sizes:** Small – 6XL, Talls Available MD-4X

**Colors:** Available in Black, Khaki, Heather Gray, Hi-Vis Yellow with 3M™ Scotchlite™ Reflective Material for enhanced visibility



**SSCAT**  
MEN'S SHORT SLEEVE CREW  
with Pocket

**LSCAT**  
MEN'S LONG SLEEVE CREW  
with Pocket

**HSAT**  
MEN'S 3-BUTTON, LONG SLEEVE HENLEY  
with Pocket

# HIGH PERFORMANCE FR HI-VIS KNITS



**SSCAT29RT**  
MEN'S HI-VIS SHORT SLEEVE CREW  
with Pocket and 3M™ Scotchlite™ Reflective  
Material - Comfort Trim

**LSCAT29RT**  
MEN'S HI-VIS LONG SLEEVE CREW  
with Pocket and 3M™ Scotchlite™ Reflective  
Material - Comfort Trim

**HSAT29RT**  
MEN'S HI-VIS 3-BUTTON LONG SLEEVE HENLEY  
with Pocket and 3M™ Scotchlite™ Reflective  
Material - Comfort Trim



- Drop shoulder design
- No seam on top of shoulder or under arm
- Left chest pocket
- Flat Seam Construction for greater comfort and no chafing
- Rolled side seam to front and back for superior comfort

Room above the  
pocket for your  
corporate logo



Sleeve labeling  
quickly identifies  
garment standards



Tag-free collar for  
greater comfort





# WOMEN'S HIGH PERFORMANCE FR KNITS

LIGHTWEIGHT | INHERENTLY FR | PERMANENT MOISTURE WICKING



LSCWAT06

LSCWAT20

### FR/AR Protection Tailored for Women.

At last! High Performance protection for Women! These High Performance FR knit shirts have the same FR/AR Protection as the men's styles yet are constructed with classically tailored details for a more accurate women's fit.

- Unparalleled Cat 2 protection at 16.4 cal/cm<sup>2</sup>
- NFPA 70E and NFPA 2112 - UL Certified
- Moves moisture away from your body faster, from front to back, to spread quicker for superior drying
- Excellent breathability
- Soft and comfortable

### Style Numbers:

**LSCWAT** – Women's Long Sleeve Crew

**HSWAT** – Women's 3-Button, Long Sleeve Henley

### Specifications:

**Fabric:** 6.95 oz. Inherently FR Lightweight Fabric

**Standard:** NFPA 70E, NFPA 2112 - UL Certified

**ATPV:** 16.4 cal/cm<sup>2</sup> CAT: 2

**Sizes:** XS - 4X, Talls Available MD - 2X

**Colors:** Available in Heather Gray and Khaki



HSWAT06

HSWAT20



# HIGH PERFORMANCE FR KNIT BUTTON-UP

LIGHTWEIGHT | INHERENTLY FR | PERMANENT MOISTURE WICKING



ISHAT06

THE ONLY  
**16**cal

BUTTON-UP SHIRT  
IN THE INDUSTRY

## The Only 16-cal Button Up Shirt in the Industry.

Featuring Lakeland's lightweight knit fabric offering permanent moisture wicking technology, you'll love the optimal fabric blend and stylish design. The optimal fabric blend for superior performance, protection, and comfort.

- 6.9 oz. Lightweight Knit
- Inherently FR
- Permanent Moisture Wicking
- Excellent Mid Layer Option
- Shirt Features:
- Button-Down Collar
- Athletic Cut
- Tag Free Collar for Greater Comfort
- Two Chest Pockets
- Hi-Vis Style features 3M™ Scotchlite™ Reflective Material-Comfort Trim
- Hi-Vis Style meets ANSI 107 Class 3

## Style Numbers:

ISHAT

## Specifications:

**Fabric:** 6.9 oz. Inherently FR Knit Fabric

**Standard:** NFPA 70E, NFPA 2112 - UL Certified

**ATPV:** 16.4 cal/cm²

**CAT:** 2

## Sizes:

- **Khaki & Gray:** SM-5XL, Talls Available MD-4X
- **Hi-Vis:** XS-5XL, Talls Available MD-4X

**Colors:** Available in Khaki, Gray, and Hi-Vis Yellow



ISHAT20

ISHAT29RT

**3M**  
**Scotchlite™**  
Reflective Material





# 6.5 oz. WESTEX® DH BUTTON-UP SHIRTS

LIGHTWEIGHT | INHERENTLY FR | PERMANENT MOISTURE WICKING



8.9  
cal

Westex  
DH

ISH65DH

- Drop shoulder design
- Button-down collar
- Left pocket with pen slot
- Athletic cut

### Perfect for Mid-layer Protection!

- Inherent moisture management
- 6.5 oz. lightweight inherently FR fabric
- Dual Hazard Protection for Arc Flash and Flash Fire
- NFPA 2112 - UL Certified
- NFPA 70E, CAT 2
- Excellent breathability
- FR protection cannot be washed out or worn away
- Soft and Comfortable
- Hi-Vis Style features 3M™ Scotchlite™ Reflective Material-Comfort Trim
- Hi-Vis Style meets ANSI 107 Class 3

### Style Numbers:

ISH65DH

ISH65DH29RT *Hi-Vis Yellow*

### Specifications:

**Fabric:** 6.5 oz. Westex® DH, Inherently FR Fabric

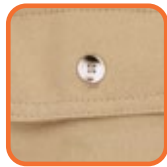
**Standard:** NFPA 70E, NFPA 2112 - UL Certified

**ATPV:** 8.9 cal/cm²

**CAT:** 2

**Sizes:** Small – 6XL, Talls Available MD-4X

**Colors:** Available in Navy Blue, Khaki, Gray, Medium Blue, Royal Blue and Hi-Vis Yellow



Button closure keeps pockets secure



Never lose a pen with the left pocket pen slot



Tag free collar for greater comfort



Long rounded tail keeps shirt tucked in for neater appearance



NAVY BLUE

KHAKI

GRAY

MEDIUM BLUE

ROYAL BLUE

HI-VIS YELLOW

3M  
Scotchlite™  
Reflective Material





**3M**  
Scotchlite™  
Reflective Material

**Westex®**  
DH



ISHW65DH

ISHW65DH29RT

## WOMEN'S 6.5 OZ. WESTEX® DH BUTTON-UP SHIRTS

**LIGHTWEIGHT / INHERENTLY  
FR / PERMANENT MOISTURE  
WICKING**

Designed with a classically  
tailored women's cut, combined  
with built-in FR protection.  
Comfortable function all day, in  
all types of working conditions.

- Inherent moisture management
- 6.5 oz. lightweight inherently FR fabric
- Dual Hazard Protection: Arc Flash and Flash Fire
- NFPA 2112 - UL Certified
- NFPA 70E, CAT 2
- Excellent breathability
- FR protection cannot be washed out of fabric or worn away
- Soft and Comfortable
- Hi-Vis Style features 3M™ Scotchlite™ Reflective Material-Comfort Trim
- Hi-Vis Style meets ANSI 107 Class 3

### Style Numbers:

**ISHW65DH**

*Women's Khaki Button Down*

**ISHW65DH29RT**

*Women's Hi-Vis Yellow with Reflective Striping*

### Specifications:

**Standard:** NFPA 70E, NFPA 2112 - UL Certified

**ATPV:** 8.9 cal/cm²    **CAT:** 2

**Sizes:** XS - 3X, Talls Available MD - 3X

**Colors:** Available in Khaki and Hi-Vis Yellow



## HIGH PERFORMANCE FR WAFFLE

**WAFFLE CUT FABRIC**



LSCMWZ

LSCMWH

### WAFFLE CUT FR QUARTER ZIP

Waffle Cut Fabric meets High Performance FR  
Design for the ultimate Mid Layer Garment.

- Quarter Zip Design
- Lightweight MID Layer Fabric
- Permanent Moisture Wicking
- Soft hand with a bit of added stretch for comfort
- NFPA 2112 - UL Certified
- NFPA 70E, CAT2

**Style Numbers:** **LSCMWZ**

### Specifications:

**Fabric:** 8.0 oz. Waffle Cut Inherently FR Fabric

**Standard:** NFPA 70E, NFPA 2112 - UL Certified

**ATPV:** 9.7 cal/cm²    **CAT:** 2

**Sizes:** XS - 5XL, Talls Available MD - 5X

**Colors:** Black



### WAFFLE CUT FR HOODIE W/ NECK GAITER

Waffle Cut Fabric meets High Performance FR Design  
for the ultimate Mid Layer Garment.

- Pullover Hoodie Design
- Integrated Neck Gaiter for additional protection of neck, mouth and nose
- Lightweight MID Layer Fabric
- Permanent Moisture Wicking
- Soft hand with a bit of added stretch for comfort
- NFPA 2112 - UL Certified
- NFPA 70E, CAT2

**Style Numbers:** **LSCMWH**

### Specifications:

**Fabric:** 8.0 oz. Waffle Cut Inherently FR Fabric

**Standard:** NFPA 70E, NFPA 2112 - UL Certified

**ATPV:** 9.7 cal/cm²    **CAT:** 2

**Sizes:** XS - 5XL, Talls Available MD - 5X

**Colors:** Black



# HIGH PERFORMANCE FR SWEATER KNIT

LIGHTWEIGHT | INHERENTLY FR | PERMANENT MOISTURE WICKING



14  
cal

LSCSK06

## TOUGH ON THE OUTSIDE, SOFT ON THE INSIDE - WARM ALL AROUND

It's hard to believe this is FR. Lakeland's new High Performance FR Sweater-Knit is the soft and comfortable FR pullover you need when the weather turns cold. Flat seam construction with contrasting black threads will have you looking good, while permanent moisture-wicking technology and incredible horizontal stretch will keep you comfortable. The Sweater-Knit's unique design makes for an extremely comfortable and mobile fit. Wear it as a single layer or utilize as a MID layer in Lakeland's FR Layering System.

- Inherently FR Sweater Knit Fabric
- NFPA 70E - CAT2 at 14.0 cal/cm2
- Permanent Moisture Wicking Technology

Style Numbers: **LSCSK06**

### Specifications:

**Fabric:** 11.0 oz. Inherently FR Fabric

**Standard:** NFPA 70E, NFPA 2112 - UL Certified

**ATPV:** 14.0 cal/cm²                      CAT: 3

**Sizes:** XS - 5XL, Talls Available MD - 4X

**Colors:** Gray



# HIGH PERFORMANCE FR FLEECE

LIGHTWEIGHT | INHERENTLY FR | PERMANENT MOISTURE WICKING



28  
cal

IJKTPF01

## SPORTY AND MADE TO PERFORM

Lakeland's new High Performance FR Fleece combines two different fleece fabrics for comfort and durability, with a sporty black and gray color-block design. At 12 oz, this jacket is your go-to jacket for all season. To add warmth and strength, we constructed the sleeve tops and yoke of the garment with the same gray fabric utilized in the High Performance FR Jacket, coupled with a fuzzier, cozier fleece that surrounds the torso. Featuring inherent, permanent moisture-wicking technology so you stay cool and dry all year long. Wear as a single layer or as a MID layer in Lakeland's FR Layering System.

### FR Fabric Features (Top Jacket):

- 12 oz. Lightweight Inherently FR Fabric
- NFPA 70E CAT 3 at 28 cal/cm2
- Permanent Moisture Wicking

### Fleece Fabric Features:

- 11.5 oz. Lightweight Inherently FR Fabric
- NFPA 70E CAT 4 at 40 cal/cm2
- Permanent Moisture Wicking

Style Numbers: **IJKTPF01**

### Specifications:

*Top Jacket*

**Fabric:** 12.0 oz. Inherently FR Fabric

**Standard:** NFPA 70E, NFPA 2112 - UL Certified

**ATPV:** 28 cal/cm²

*Fleece Fabric*

**Fabric:** 11.5 oz. Inherently FR Fabric

**Standard:** NFPA 70E, NFPA 2112 - UL Certified

**ATPV:** 40 cal/cm²

**Sizes:** XS - 5XL, Talls Available MD - 4X

**Colors:** Gray/Black





# HIGH PERFORMANCE FR HOODIES

DUAL HAZARD / WATER AND WIND RESISTANT



## PULL-OVER OR ZIP HOODIES MADE TO PERFORM

- Permanent moisture wicking
- Inherently FR Fabric
- Dual certified – NFPA 70E, NFPA 2112 - UL Certified
- Front hand warmer pockets
- Sleeves feature rib-knit cuffs
- Hi-Vis Style features 3M™ Scotchlite™ Reflective Material-Comfort Trim
- Water and Wind Resistant

### Style Numbers:

**IHDP12ANT** Pullover Hoodie

**IHPANT29RT** Hi-Vis Pullover Hoodie with Reflective Trim

**IHD12ANT** Zipper Front Hoodie

### Specifications:

**Fabric:** 12.3 oz, water and wind resistant

**Fabric Content:** 48% modacrylic, 37% Tencel®, 10% Twaron®, 5% Spandex®

**Standard:** NFPA 70E, NFPA 2112 - UL Certified

**ATPV:** 28 cal/cm²      **CAT:** 3

### Sizes:

- **Pullover:** XS - 5XL, Talls Available MD - 4X
- **Zip Front:** SM - 5XL, Talls Available MD - 5X

**Color:** Black or Hi-Vis Yellow



HI-VIS

# HIGH PERFORMANCE FR JACKETS

DUAL HAZARD / WATER AND WIND RESISTANT



## SLEEK, COMFORTABLE OUTER LAYER

- Permanent moisture wicking
- Inherently FR Fabric
- Dual certified – NFPA 70E, NFPA 2112 - UL Certified
- Smooth finish is extremely abrasion resistant and prevents snagging
- Front hand warmer pockets
- Hi-Vis Style features 3M™ Scotchlite™ Reflective Material-Comfort Trim
- Water and Wind Resistant

### Style Numbers:

**IJKT12ANT** Jacket

**IJKT12ANT29RT** Hi-Vis Jacket with Reflective Trim

### Specifications:

**Fabric:** 12.3 oz, water and wind resistant

**Fabric Content:** 48% modacrylic, 37% Tencel®, 10% Twaron®, 5% Spandex®

**Standard:** NFPA 70E, NFPA 2112 - UL Certified

**ATPV:** 28 cal/cm²      **CAT:** 3

**Sizes:** XS - 5XL, Talls Available MD - 4X

**Color:** Heather Gray or Hi-Vis Yellow



HI-VIS



## HPFR CAMO JACKET

- Inherently FR Fabric
- Smooth finish is extremely abrasion resistant and prevents snagging
- Four 6" zipper pockets (2 hand pockets, 1 left chest pocket, 1 arm/sleeve pocket)
- Wind and water resistant

### Style Numbers:

**JKTAT30** FR Camouflage Jacket

### Specifications:

**Fabric:** 8.0 oz, Inherently FR, wind proof, water resistant

**Standard:** NFPA 70E, NFPA 2112 - UL Certified

**ATPV:** 14.6 cal/cm²      **CAT:** 2

**Sizes:** Sizes: SM - 4XL, Talls Available LG - 4X

**Color:** Camo





# High Performance Lightweight Pants

Dual Hazard / Men's & Women's



## Dual Certified Lightweight Pant

- 8oz UltraSoft® Basketweave
- Wider waist band for increased comfort
- Crotch gusset for increased comfort
- Articulated knees for increased mobility and comfort
- Extra material heel to prevent wear
- Right leg cell phone pocket
- Right leg stealth zippered pocket
- Articulated back pockets-more comfortable

### Style Numbers:

**IP8WUT** Men's  
**IP8WWUT** Women's

### Specifications:

**Fabric:** 8oz 88/12 Westex® Basketweave  
**ATPV:** 9.8 cal/cm<sup>2</sup>  
**Sizes:**  
**Men:** 28-36, 38-50 Even, Inseams 30-36  
**Women:** 0-20 Even, Inseams 28-34  
**Colors:** Navy Blue, Khaki, Olive Green



# HPFR Garment Sizing

## High Performance Series Garments

High Performance FR Series Knits and Shirts									
	S	M	L	XL	2X	3X	4X	5X	6X
Chest	36-38	40-42	44-46	48-50	52-54	56-58	60-62	64-66	68-70
Sleeve	35	36	36.5	37	38	39	40	41	42

Tall sizes MT-4XT add 2" to the standard sleeve length, 2" to the body.

High Performance FR Series Hoodies and Jackets									
	XS	S	M	L	XL	2XL	3XL	4XL	5XL
Chest	32-34	36-38	40-42	44-46	48-50	52-54	56-58	60-62	64-66
Sleeve	33	34	35	36.5	38	39	40	41.5	43

## Women's FR Garment Sizing

High Performance FR Series Knits and DH Shirts									
	X/S	S	M	L	XL	2X	3X	4X	
Fits	1/2	4/6	8/10	12/14	16/18	20/22	24/26	28/30	

Tall sizes M-3X

Women's FR Pants													
Even Sizes	0	2	4	6	8	10	12	14	16	18	20	22	24

Inseams available in even sizes from 28-34







*Critical Environment*



*Heat Protective Apparel*



*Fire Fighter Turnout Gear*



*FR/AR High Visibility*



t 780.430.9693

e info@designquarry.com

www.designquarry.promo



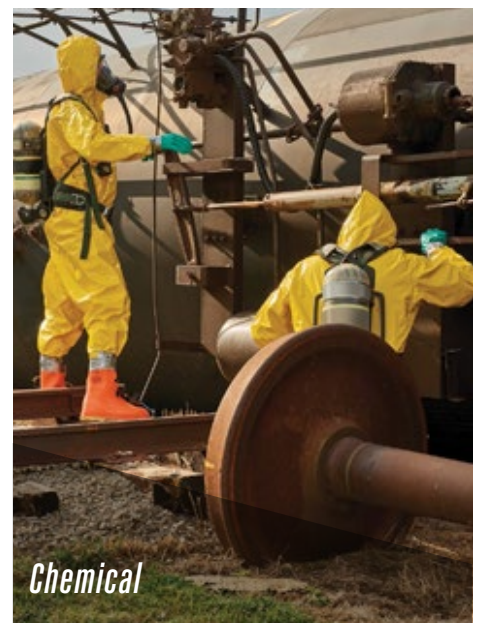
*Disposable*



*Hand and Arm Protection*



*Wildland Gear*



*Chemical*